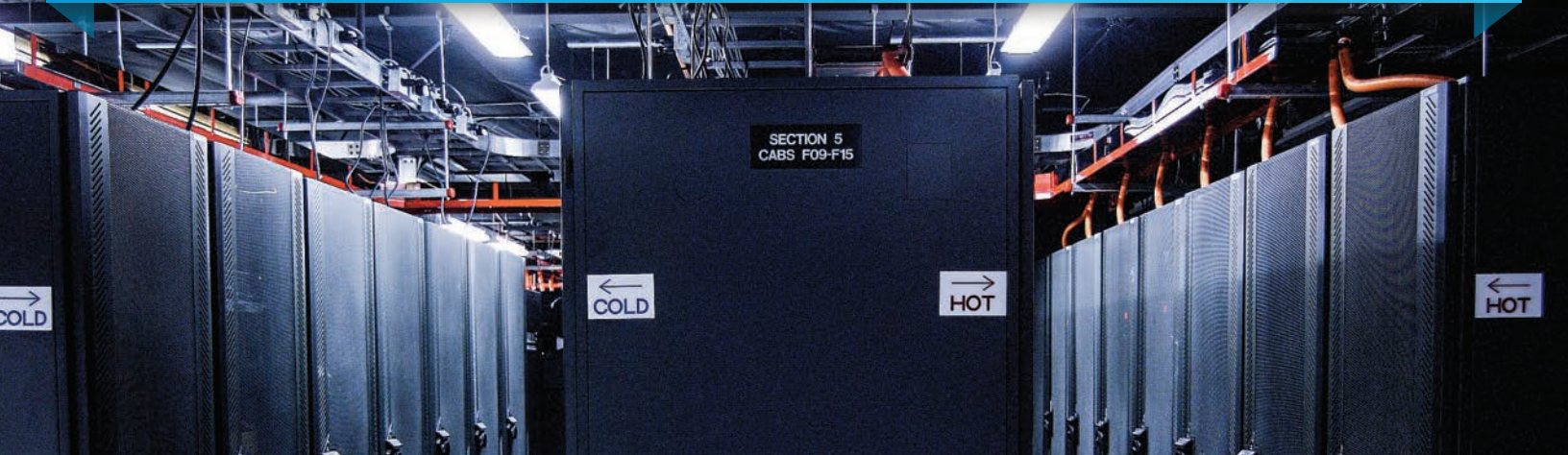




DATA CENTER SPECS

Agoura Court (AG1) Technical Specifications
Carrier Grade Facility



ELECTRICAL CAPACITY & POWER SYSTEMS

- Generators..... (2) Units deployed in A/B configuration
- Transfer Switches..... Automatic Transfer Switches ensures smooth transition to backup power
- UPS Systems (2) UPS systems deployed A/B configuration
- PDU N+1 Transformers Deployed A/B configuration
- TVSS..... Onsite Transient Voltage Surge Suppression systems
- Power Circuits..... 120, 208, 220VAC available, in either single phase or three phase
- Power per rack 5Kw with true A/B power configuration

NETWORK

- » Fully redundant architecture including dual network drops to each cabinet and cage
- » HSRP fail-over protection
- » Intelligent Routing Technology
- » 99.999% Service Level Agreement
- » Dual NOCs monitor all equipment from inside and outside the network

ENVIRONMENTAL CONTROLS

- » Air provided via 2N HVAC systems
- » Constant ambient air temperature of 72 degrees (+/- 2°)
- » Automatic humidity controls for 45% (+/- 5%)
- » Motion sensitive aisle lighting to reduce power consumption
- » Perimeter leak detection system around Data Center and A/C units with monitoring and alarming system

CONNECTIVITY

- » Dual Fiber Paths via separate entrances
- » Multiple Fiber connections to America's Top 8 tier-1 backbone providers
- » Private Fiber connections to all four Data Center/POP Locations

AVAILABLE SOLUTIONS

- » Full Cage Private Suite with 5 open rack configuration
- » Half Cage Private Suite with 3 open rack configuration
- » Full Cabinets approximately 42U space
- » Half Cabinets approximately 20U space
- » Custom Cages
- » Physical or Virtual Managed Servers
- » Server Monitoring
- » System Security



FIRE SUPPRESSION

- » Very Early Smoke Detection Apparatus (VESDA) designed to detect the microscopic particles of combustion
- » Double Interlocking Pre-Action Dry Pipe System
- » Class "A" multiplexed addressable building system
- » Integrated smoke/heat detector system

SECURITY AND ACCESS

- » Key Code access control system with activity logging & auditing
- » Hand scan based biometric systems
- » Video capture is executed at time of all entry
- » Facilities are monitored with 24 hour DVR systems and 30 day video storage
- » Complete perimeter and roof surveillance
- » No signage, nondescript building

TELCO INFO

NPA/NXX 818-735
 CLLI Code AGORCA11
 LEC AT&T
 LATA (730) Los Angeles

SQUARE FOOTAGE BREAKDOWN

Leased square footage 18,400 sq. ft.
 Colocation area 6,000 sq. ft.
 Flex working space 150 sq. ft.
 Equip. Holding Cages 2
 Ceiling Height 10 ft.

PARKING

Building parking lot available to customers at no charge

LOCATION ORIENTATION

1.5 Miles from Key Info AG1 Data Center (Canwood)
 19.9 Miles from Camarillo Airport
 37.7 Miles from Los Angeles Int'l Airport

ROOF SPACE

- » Antenna installations available
- » Conduit from roof to Data Center
- » Restricted roof access with motion detection alarms

BUILDING TYPE

2 story – steel frame with stucco & stone exterior

CONSTRUCTION TYPE

Type 4 Structure Fully Sprinklered

FLOOR LOAD CAPACITY

18" raised floor 1250 lb. per square foot on floor concentrated load panels